



ATM



BASIC DATA :

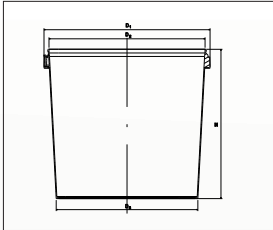
Net weight:
 Container without lid: 20 g
 Lid: 10,5 g
 Volume: 0,5 l
 Volume to rim: 0,65 l

TOLERANCES:

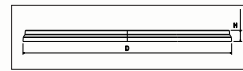
Dimensions: +/- 1 mm
 Weight/Volume: +/- 5%

CONTAINER DIMENSIONS:

LID DIMENSIONS:

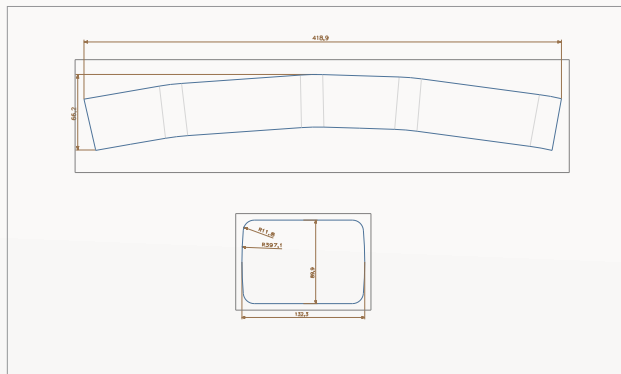


D₁: 148,30 mm x 106,500 mm
 D₂: 138,00 mm x 96,20 mm
 D₃: 126,00 mm x 85,00 mm
 H: 58,90 mm



D: 149,50 mm x 108,00 mm
 H: 11,50 mm

IML/SCREEN PRINT



IML/Screen print

IML

Screen print

	IML/Screen print	IML	Screen print
Container			
Width (mm) :		418,9	
Lenght (mm) :		46,5	
Lid			
Width (mm) :		132,3	
Lenght (mm) :		89,9	
Base			
Width (mm) :			
Lenght (mm) :			

PACKAGING:



Containers

Lids

Pallet dimensions (mm) :	800 x 1200	800 x 1200
Box dimensions (mm):	580x380x580 _{p+tt}	580x380x380 _{p+tt}
Pieces per box :	330	816
Boxes per pallet :	20	24
Pieces per pallet :	6600	19854

COLOR:

Containers and lids are made white or transparent. By demand they can be made in variety of colors.



HANDLE:

	Weight
Plastic handle	
Metal handle	

www.atm.co.rs

Our packaging is made coresponding law constitution about health integrity of provision and objects of general appliance (Službeni list SFRJ), and act standard about conditions of health integrity objects of general appliance witch can be refere in commerce (Službeni list SFRJ) 26/83). It is produced from category of polypropylen witch is granted for food contact by EU Directive 2002/72/EC and amendments.

